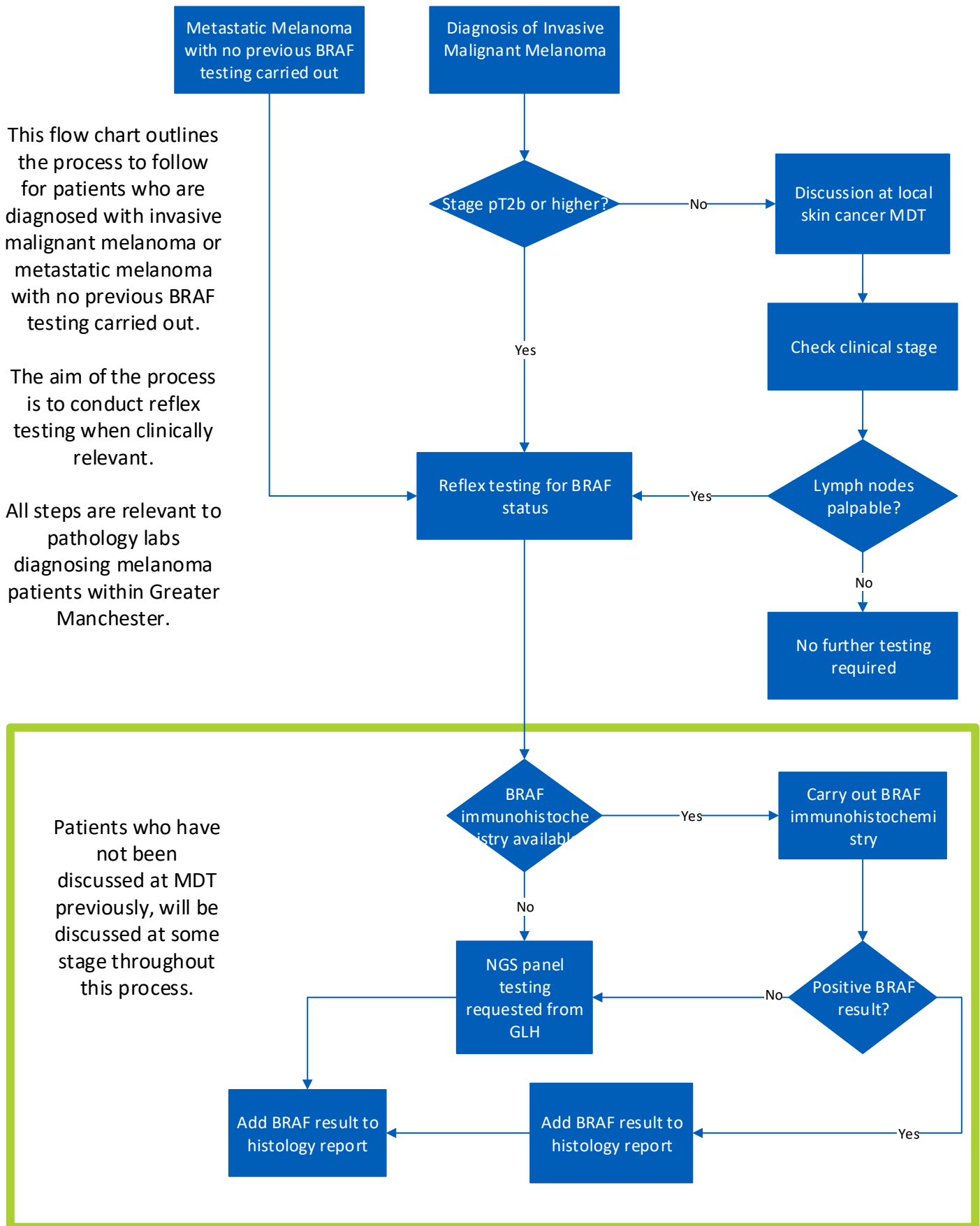


Reflex testing process for melanoma patients

This flow chart outlines the process to follow for patients who are diagnosed with invasive malignant melanoma or metastatic melanoma with no previous BRAF testing carried out.

The aim of the process is to conduct reflex testing when clinically relevant.

All steps are relevant to pathology labs diagnosing melanoma patients within Greater Manchester.



Patients who have not been discussed at MDT previously, will be discussed at some stage throughout this process.

