

About the locality

Population: 225,651 (2024)

Deprivation: 23rd out of 317 local authority districts in England (2019)

Patients on GP cancer registers (2024): 8,149



Interventions & Resources

Point of referral

- Cancer Care Coordinator (where available)
- Tameside Macmillan Unit Directory (Appendix I)
- macmillan.org.uk



Treatment

- Holistic Needs Assessment
- Treatment Summary for each treatment type
- Macmillan Information and Support Service:
- Cancer Care Discussion (CAN005)
- www.cancercaresmap.org



Booking appointment

- Macmillan Information and Support Service
- Prehab4Cancer for curative patients in Colorectal, Lung & Upper GI

End of treatment

- End of treatment summary
- Appropriate follow up pathway
- Cancer Care Review (CAN004)
- Treatment Summaries: https://future.nhs.uk/GM_CancerAlliance_PCP/view?objectID=43995216



Follow up

- Consultant-led Follow-up
- Or
- Personalised Stratified Follow-up
- PSFU Approved Protocols: https://future.nhs.uk/GM_CancerAlliance_PCP/view?objectID=44627888
- www.cancercaresmap.org



Health & Wellbeing

- Health & Wellbeing Events and support groups
- Macmillan Information and Support Service
- Tameside Health & Wellbeing College
- Maggie's Centre

Discharge to Primary Care

- Cancer Care Review (CAN004)
- Primary Care information on PSFU: https://future.nhs.uk/GM_CancerAlliance_PCP/view?objectID=50096336

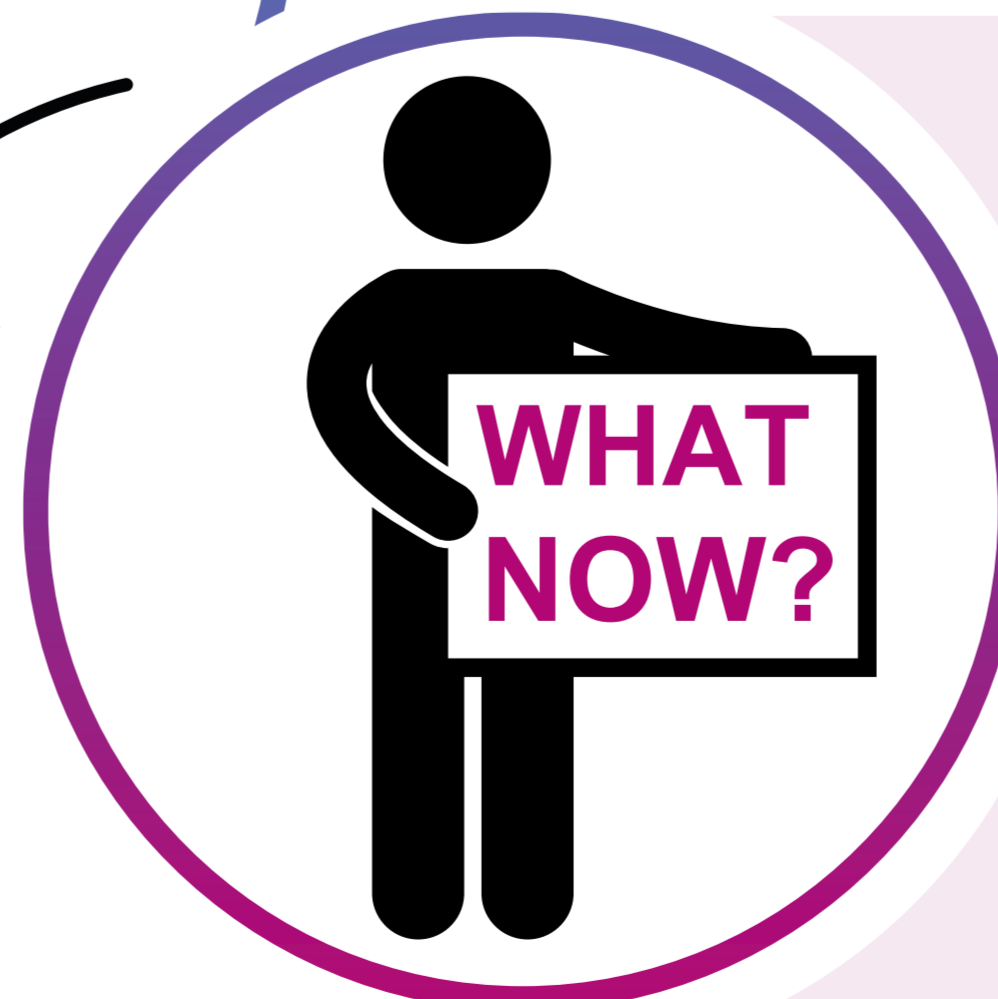


Late Effects of cancer & treatment

- Macmillan Information and Support Service
- Talking Therapies

Non-curative

- Macmillan Information and Support Service
- Willow Wood Hospice, Ashton
- Blythe House Hospice, High Peak
- Specialist Community Palliative care team



Moving on

- Macmillan Information and Support Service
- Live Active GP Referral Service
- Maggie's Centres

Key: input from clinical team input from GP
 refer/signpost online resource

Scan to read the full report

