

## About the locality

**Population:** 326,911(2024)

**Deprivation:** 154th out of 317 local authority districts in England (2019)

**Patients on GP cancer registers (2024): 13,628**



## Interventions & Resources

### Point of referral

- Viaduct CIC Social Prescribing
  - 0161 2498290
  - referrals: <https://viaductcare.org.uk/referrals/social-prescribing-referral/>
- Citizens Advice Stockport, Oldham, Rochdale and Trafford (CASORT)
  - 0808 278 7803
  - [www.casort.org](http://www.casort.org)
  - [www.referrals.citizensadvice.org.uk/users/sign\\_in](http://www.referrals.citizensadvice.org.uk/users/sign_in)
- Stockport's Online Directory:
  - <https://www.stockport.gov.uk/directories/one-stockport-local-directory>



### Treatment

- Holistic Needs Assessment
- Treatment Summary for each treatment type
- Cancer Care Discussion (CAN005)
- Beechwood Cancer Centre
  - [www.beechwoodcancercare.org.uk](http://www.beechwoodcancercare.org.uk)
  - 0161 476 0384 | [enquiries@beechwoodcancercare.co.uk](mailto:enquiries@beechwoodcancercare.co.uk)
- Signpost for Carers
  - [info@signpostforcarers.org.uk](mailto:info@signpostforcarers.org.uk)
  - 0161 947 4690



### Booking appointment

- Prehab4Cancer for curative patients in Colorectal, Lung & Upper GI
- START
  - [www.stockport.gov.uk/groups/stockport-triage-assessment-and-referral-team](http://www.stockport.gov.uk/groups/stockport-triage-assessment-and-referral-team)
- Maggie's Manchester
  - [manchester@maggies.org](mailto:manchester@maggies.org)
  - 0161 641 4848



### Follow up

- Consultant-led Follow-up
- Or Personalised Stratified Follow-up
- PSFU Approved Protocols:
  - [https://future.nhs.uk/GM\\_CancerAlliance\\_PCP/view?objectID=44627888](https://future.nhs.uk/GM_CancerAlliance_PCP/view?objectID=44627888)
- [www.cancercaremap.org](http://www.cancercaremap.org)



### End of treatment

- End of treatment summary
- Appropriate follow up pathway
- Cancer Care Review (CAN004)
- Treatment Summaries:
  - [https://future.nhs.uk/GM\\_CancerAlliance\\_PCP/view?objectID=43995216](https://future.nhs.uk/GM_CancerAlliance_PCP/view?objectID=43995216)



### Health & Wellbeing

- Local Social Prescribing service
- Beechwood Cancer Care
- Healthy Stockport - [www.healthystockport.co.uk](http://www.healthystockport.co.uk)
- Stockport County Community Trust
  - <https://www.stockportcounty.com/community/programmes/countys-social-well-being-programme/>
  - [a.bates@stockportcounty.com](mailto:a.bates@stockportcounty.com)
  - 0161 266 2700



### Discharge to Primary Care

- Cancer Care Review (CAN004)
- Primary Care information on PSFU:
  - [https://future.nhs.uk/GM\\_CancerAlliance\\_PCP/view?objectID=50096336](https://future.nhs.uk/GM_CancerAlliance_PCP/view?objectID=50096336)



### Late Effects of cancer & treatment

- Beechwood Cancer Care
- NHS Stockport Talking Therapies
  - [www.penninecare.nhs.uk/stockporttalk](http://www.penninecare.nhs.uk/stockporttalk)
  - 0161 716 5640
- Maggie's Manchester



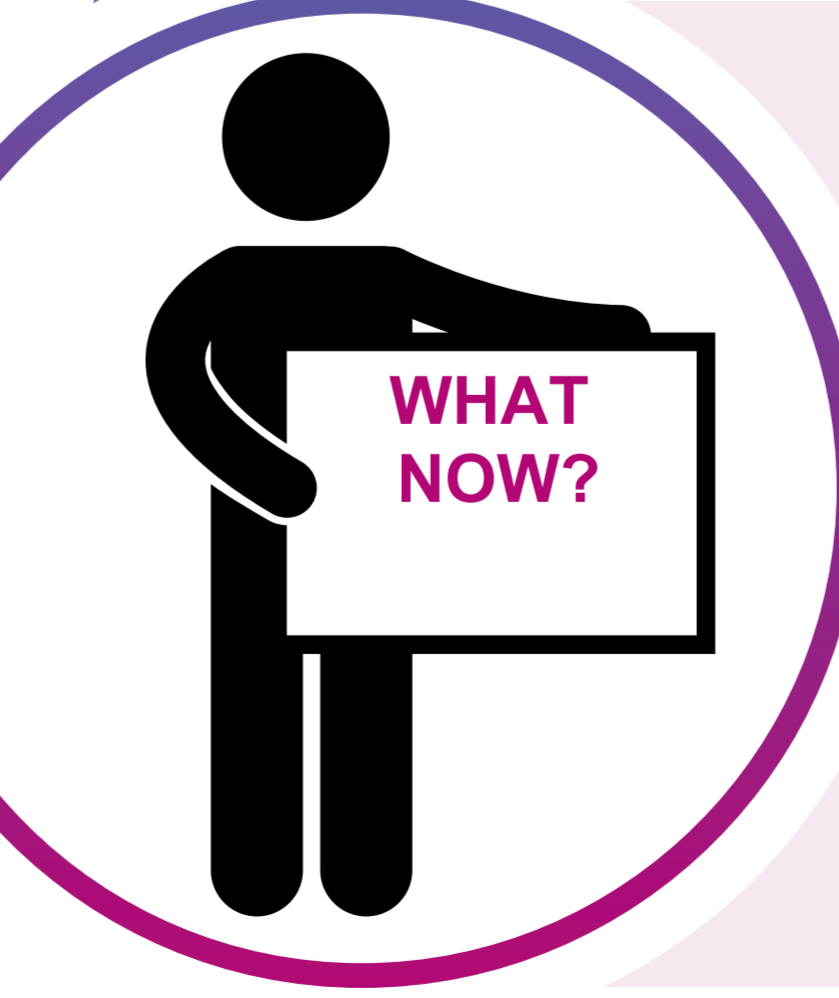
### Non-curative

- Beechwood Cancer Care
- St Ann's Hospice, Heald Green
  - clinician or self referral
  - 0161 437 8136
  - [www.sah.org.uk](http://www.sah.org.uk)
- Stockport Community Palliative Care Nursing Team
  - Clinician referral
  - 0161 206 4354



### Moving on

- Life Leisure Exercise on Prescription
  - online referral
  - [www.lifeleisure.net/exercise-referral/](http://www.lifeleisure.net/exercise-referral/)
- Stockport AgeUK
  - [www.ageuk.org.uk/stockport/](http://www.ageuk.org.uk/stockport/)
  - 0161 480 1211 | [info@ageukstockport.org.uk](mailto:info@ageukstockport.org.uk)
- CASORT
- Healthy Stockport
- [www.cancercaremap.org](http://www.cancercaremap.org)



Key: input from clinical team input from GP  
 refer/signpost online resource

Scan to read the full report

