

About the locality

Population: 249,631 (2024)

Deprivation: 17th out of 317 local authority districts in England (2019)

Patients on GP cancer registers (2024): 8,530



Interventions & Resources

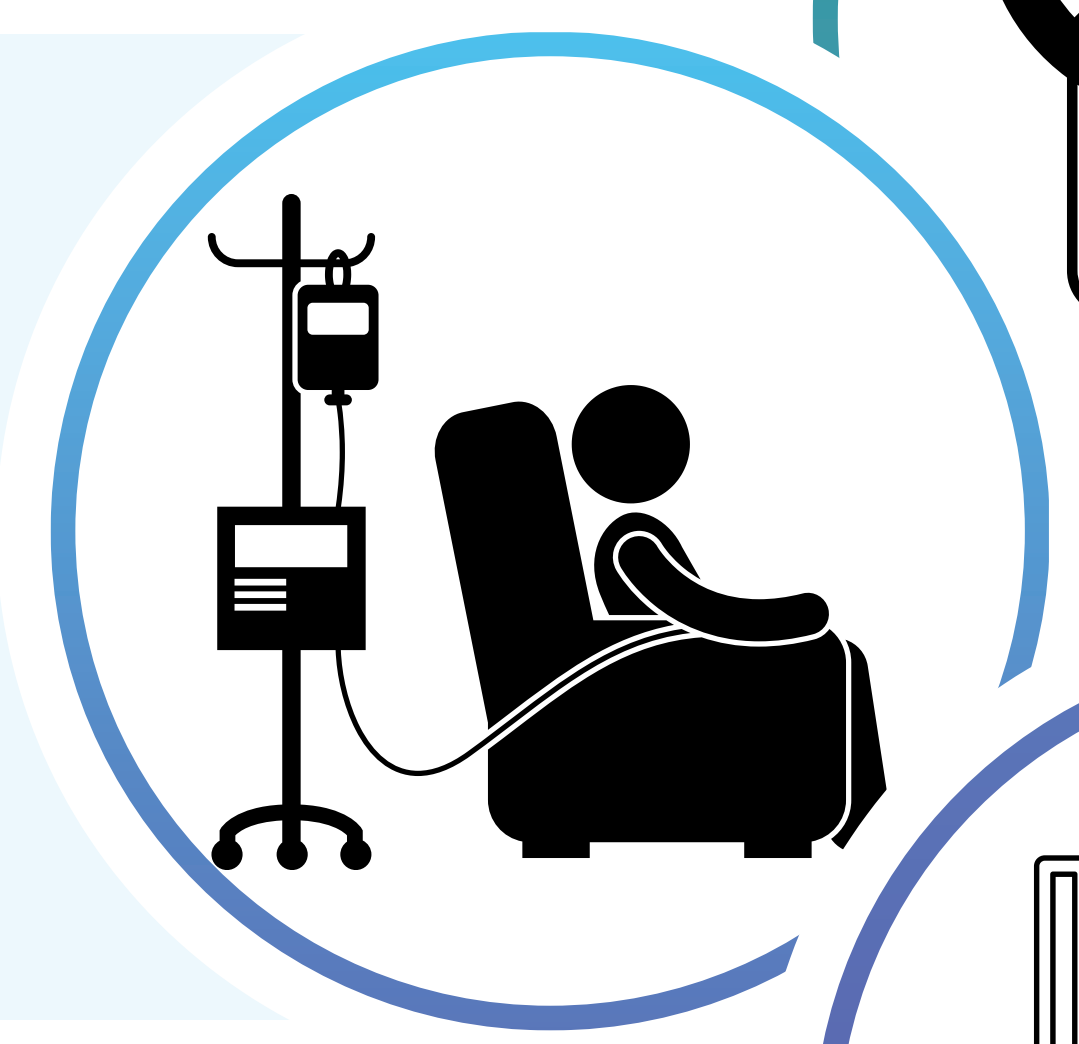
Point of referral

- Social Prescribing
 - Holistic Needs Assessment
- Macmillan Information and Support Service at Royal Oldham Hospital
- Tenants's Advocacy Service
- www.Rochdale.gov.uk/cost-living
- www.macmillan.org.uk



Treatment

- Holistic Needs Assessment
- Treatment Summary for each treatment type
- NHS Heywood, Middleton & Rochdale Talking therapies
 - Self-referral: 01706619 020 or online
 - referral via any professional
- Cancer Care Discussion (CAN005)

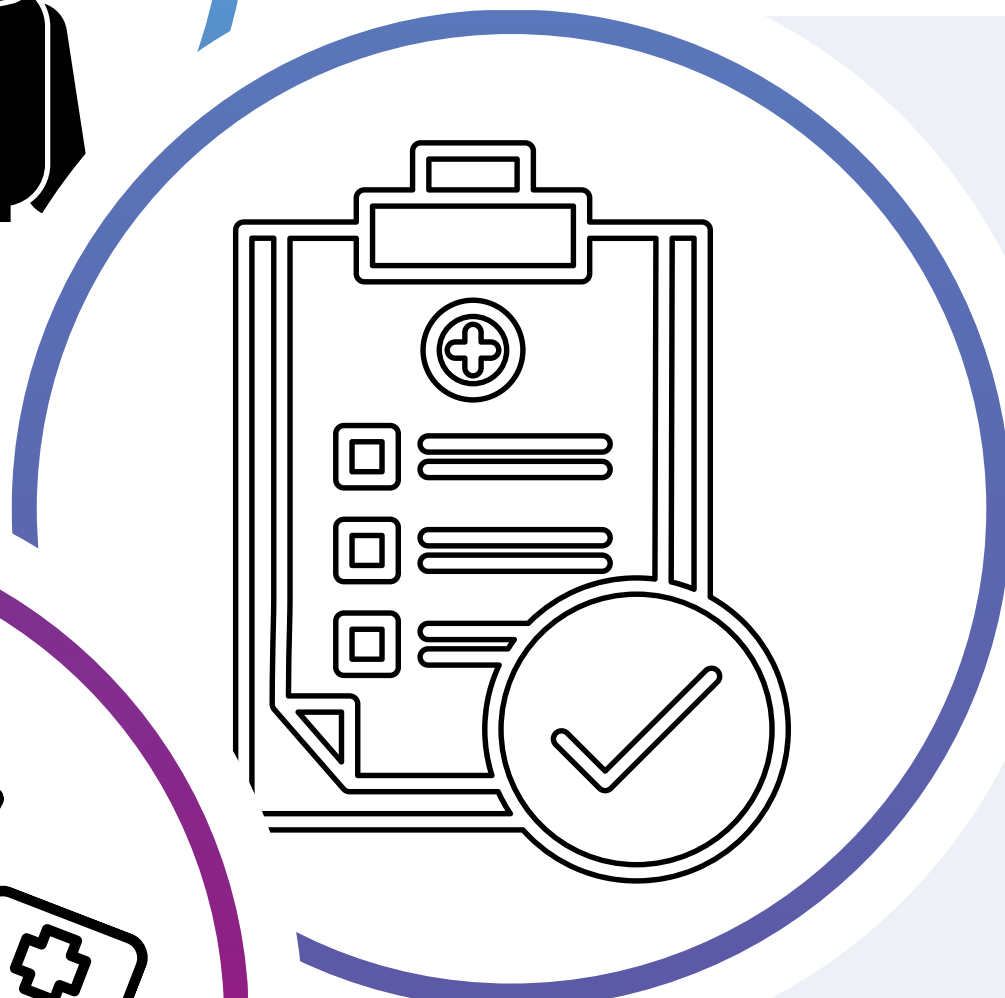


Booking appointment

- Macmillan Information and Support Service at Royal Oldham Hospital
- Oldham Maggie's Centre
- Prehab4Cancer for curative patients in Colorectal, Lung & Upper GI

Follow up

- Consultant-led Follow-up
- Or
- Personalised Stratified Follow-up
- PSFU Approved Protocols: https://future.nhs.uk/GM_CancerAlliance_PCP/view?objectID=44627888
- www.cancercaremap.org



End of treatment

- End of treatment summary
- Appropriate follow up pathway
- Cancer Care Review (CAN004)
- Treatment Summaries: https://future.nhs.uk/GM_CancerAlliance_PCP/view?objectID=43995216

Discharge to Primary Care

- Cancer Care Review (CAN004)
- Primary Care information on PSFU: https://future.nhs.uk/GM_CancerAlliance_PCP/view?objectID=50096336



Health & Wellbeing

- Health & Wellbeing Events and support groups
- Social Prescribing Rochdale & district Mind
- Macmillan Information and Support Service at Royal Oldham Hospital
- Oldham Maggie's Centre
- ourrochdale.orchahealth.com www.macmillan.org.uk

Non-curative

- Macmillan Information and Support Service at Royal Oldham Hospital
- Springhill Hospice
 - 01706 649920
 - Specialist Palliative Community Care: 01706 752 360

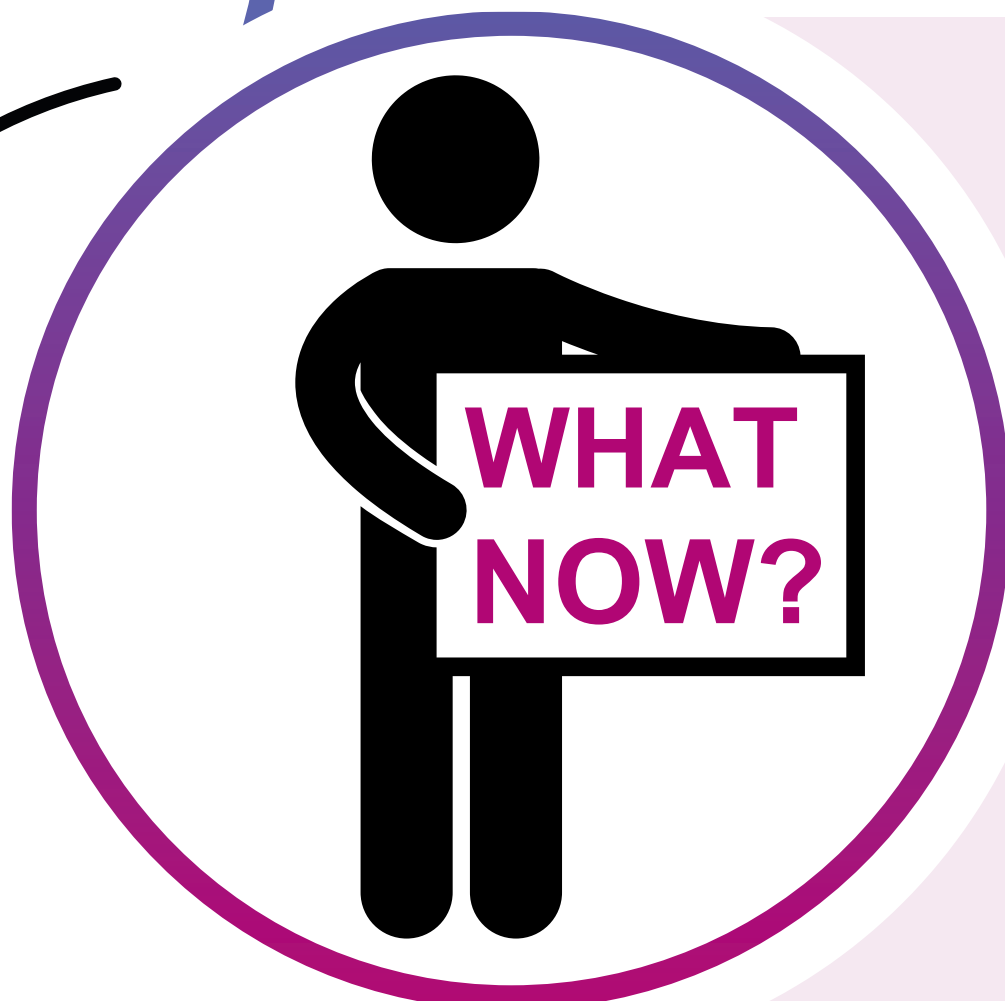


Late Effects of cancer & treatment

- Macmillan Information and Support Service at Royal Oldham Hospital
- Talking Therapies via Big Life Group

Moving on

- Macmillan Information and Support Service at Royal Oldham Hospital
- Social Prescribing
- Your Trust Rochdale GP Exercise Referral scheme
- Oldham Maggie's Centre



Key: input from clinical team input from GP
 refer/signpost online resource

Scan to read the full report

