

About the locality

Population: 738,263 (2024)

Patients on GP cancer registers
(2024): 15,205

Deprivation: 2nd out of 317 local authority districts in England (2019)



Interventions & Resources

Point of referral

- Macmillan Information and Support Centres
 - Central Manchester (0161 276 6868)
 - North Manchester (0161 604 5244)
 - South Manchester (0161 219 4876)
 - The Christie Hospital (0161 918 7745)

- Social Prescribing - The Big Life Group
 - referral via GP

- Help & Support Manchester
 - https://hsm.manchester.gov.uk/kb5/manchester/directory/directory_page?directorychannel=4

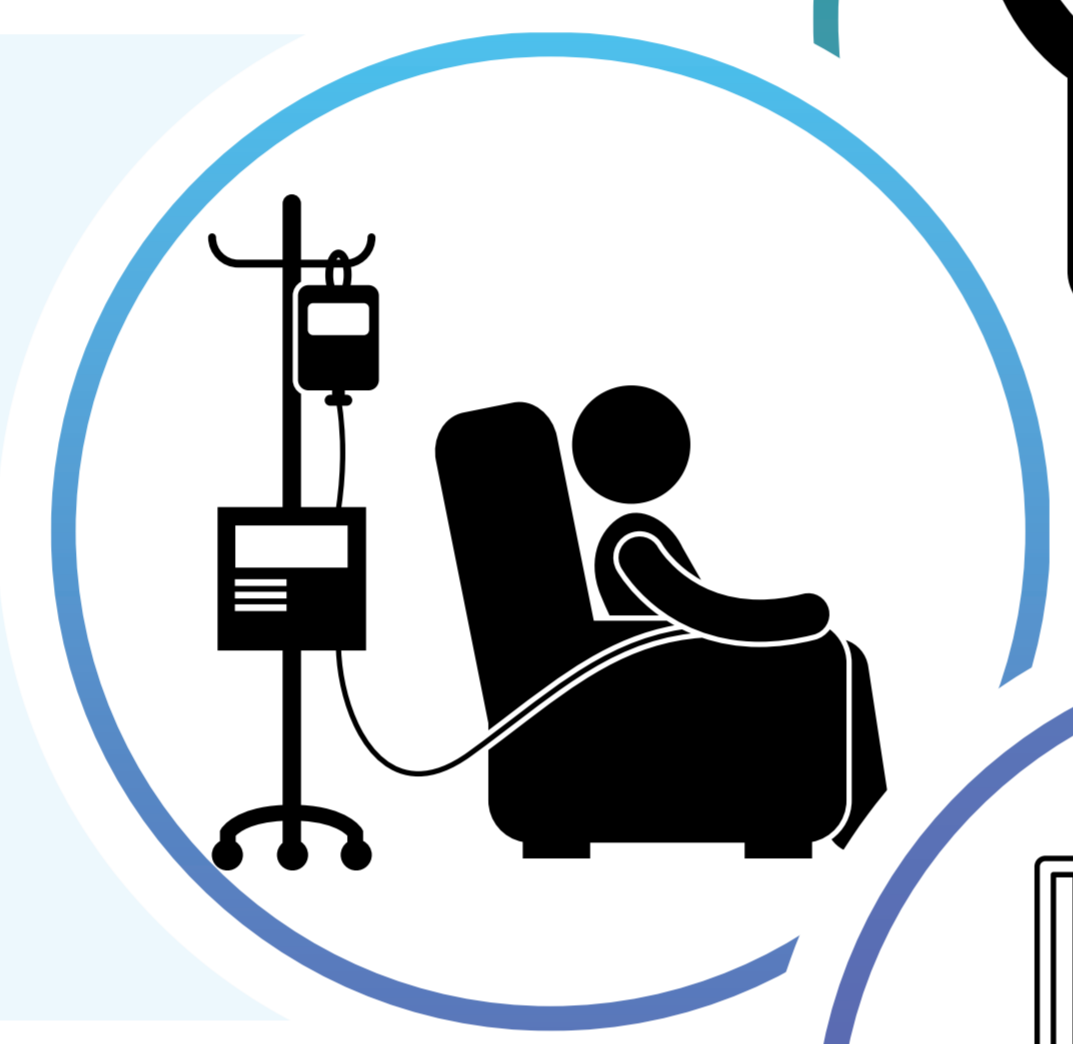


Treatment

- Holistic Needs Assessment
- Treatment Summary for each treatment type

- Cancer Care Discussion (CAN005)

- Manchester Psychological Wellbeing Service
 - self-referral or via GP
 - www.selfhelpservices.org.uk/service/manchester-psychological-wellbeing-service/



Booking appointment

- Prehab4Cancer for curative patients in Colorectal, Lung & Upper GI

- Cancer Care Diaspora
 - 07885732781
 - info@cancercarediaspora.org

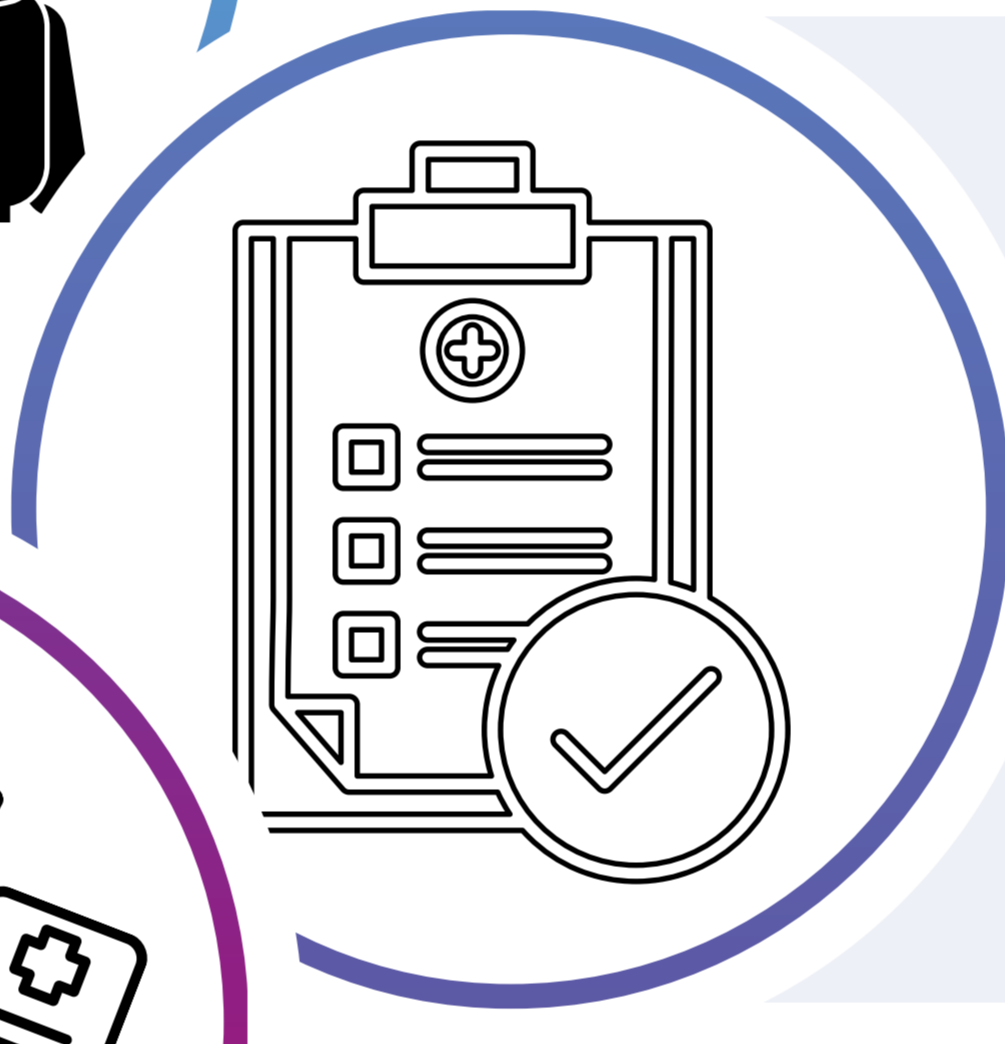
- Maggies Manchester
 - manchester@maggies.org
 - 0161 641 4848

Follow up

- Consultant-led Follow-up
- Or
- Personalised Stratified Follow-up

- PSFU Approved Protocols:
 - https://future.nhs.uk/GM_CancerAlliance_PCP/view?objectID=44627888

- www.cancercaremap.org



End of treatment

- End of treatment summary
- Appropriate follow up pathway

- Cancer Care Review (CAN004)

- Treatment Summaries:
 - https://future.nhs.uk/GM_CancerAlliance_PCP/view?objectID=43995216

Discharge to Primary Care

- Cancer Care Review (CAN004)

- Primary Care information on PSFU:
 - https://future.nhs.uk/GM_CancerAlliance_PCP/view?objectID=50096336



Health & Wellbeing

- Health & Wellbeing Events and support groups

- Social Prescribing
 - Can Survive UK
 - 0161 455 0211
 - info@can-survive.org.uk

- Greater Manchester Asbestos Support Group
 - 0161 258 0166
 - info@gmavsg.org

- www.macmillan.org.uk

Non-curative

- Manchester Macmillan Supportive & Palliative Care Community Service
 - 0161 470 6719
 - mft.Community-Macmillan-Service@nhs.net

- Hospice care available outside the locality



Late Effects of cancer & treatment

- Macmillan Information and Support Services

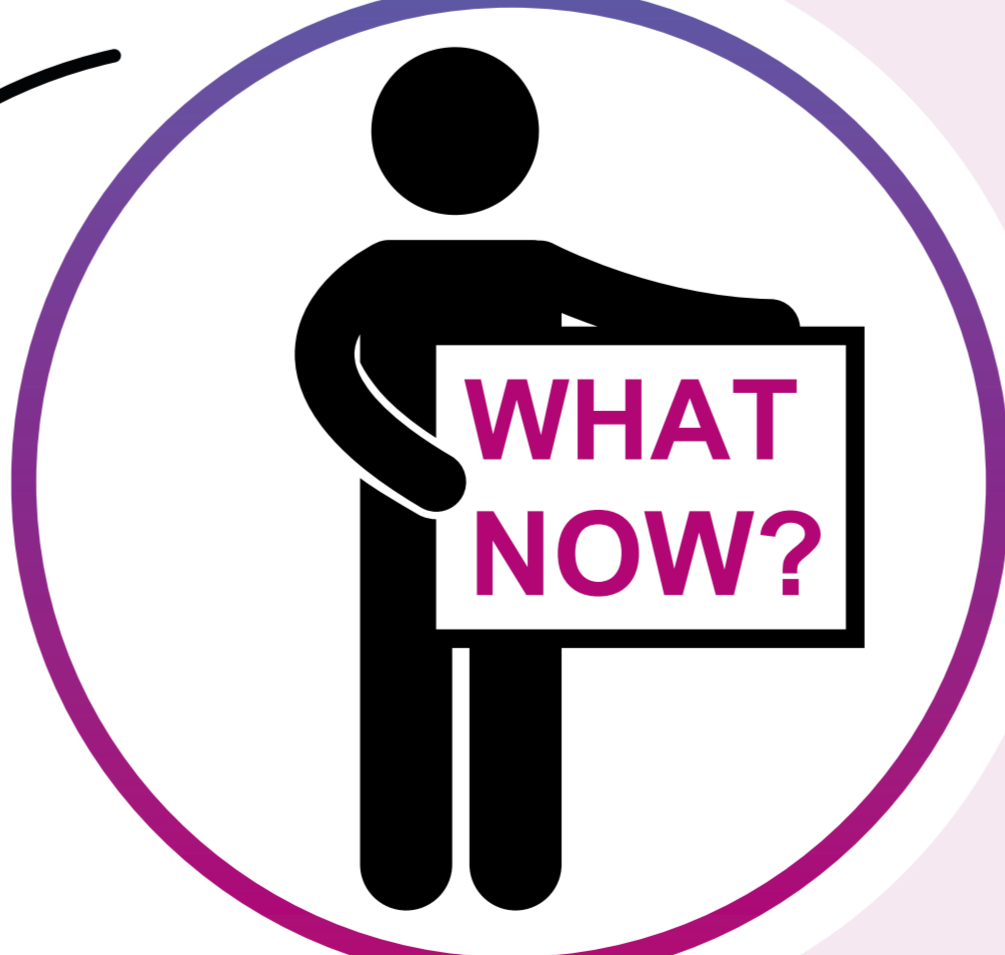
- Manchester Psychological Wellbeing Service
 - self-referral or via GP
 - www.selfhelpservices.org.uk/service/manchester-psychological-wellbeing-service/

Moving on

- MCRactive | Physical Activity Referral Service:
 - 0161 974 7839
 - physicalactivityteam@mcractive.com

- Gateway M40
 - 0161 202 3511
 - info@gatewaym40.org
 - <https://manchestercommunitycentral.org/directory>

- www.cancercaremap.org



Key: input from clinical team input from GP
 refer/signpost online resource

Scan to read the full report

