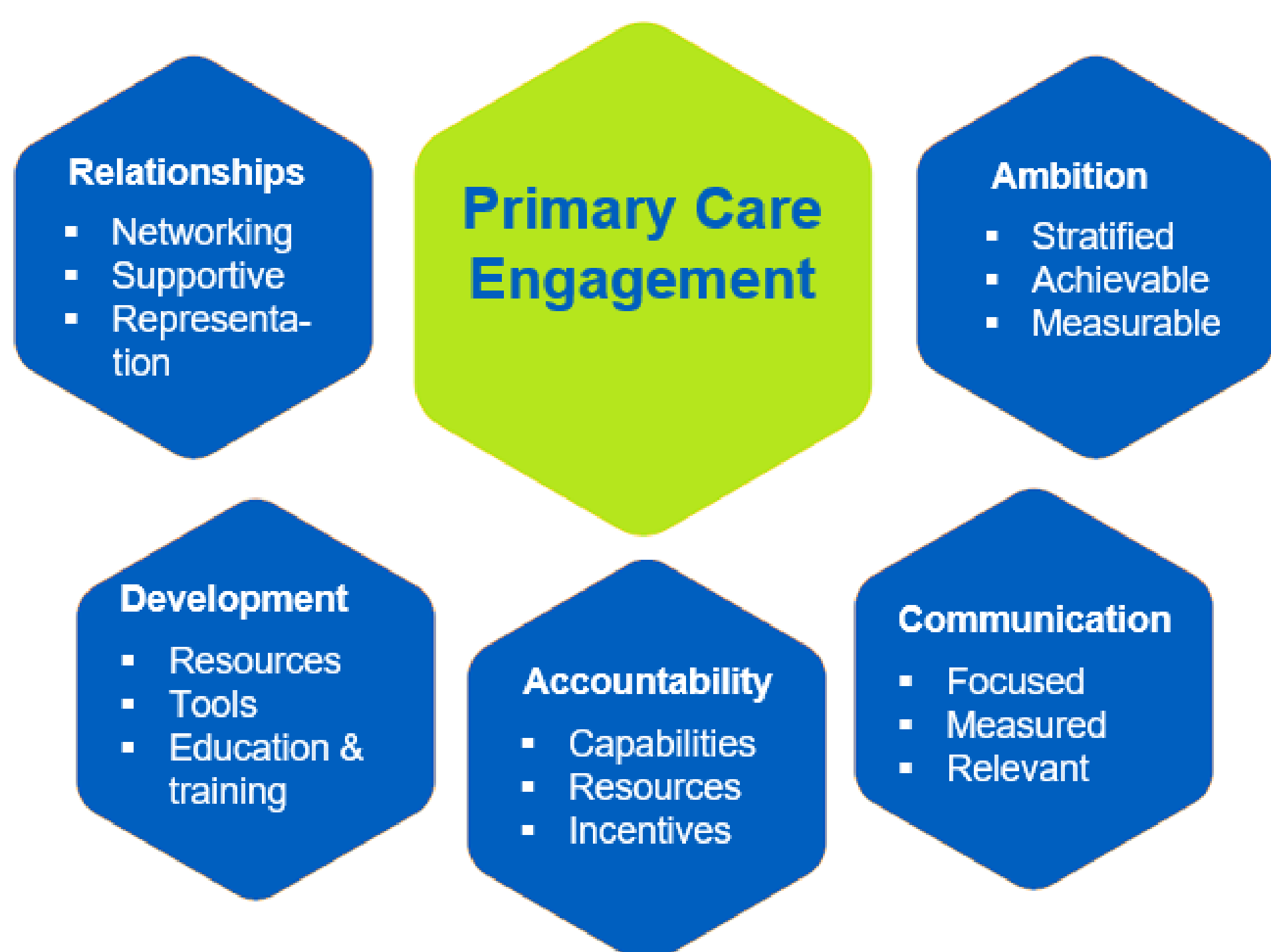


Engagement with Primary Care Networks

Ali Jones, Dr Sarah Taylor, Paul Keeling, Lauren Kelly

Aim: To engage with Primary Care Networks (PCNs) to achieve our collective ambition of 75% stage 1 and 2 cancers diagnosed by 2008.

Working Together To Achieve Our Ambition



To realise the ambition, it is essential that our engagement efforts are clear, focused and effective - and that they reflect the needs of PCNs and the patients they serve. To this end, we have progressed work across several key areas.

We are continuing to build relationships across localities and are utilising our newly established team of Early Diagnosis Facilitators.

Materials and tools have been developed. The 'Think Cancer' Clinical Decision Support Tool for use in primary care has been developed with primary and secondary care stakeholders. We have a training and education programme linked to priority pathways.

We have identified cancer leads in PCNs to help disseminate information across their network and we have provided financial support to aid engagement in the programmes of work, and for staff to attend training and development days.

Following feed-back we have streamlined our communications to make them more focus, accessible and relevant.

We recognise the significant contribution PCNs are making to achieve the ambition and we have put in place measures to report on progress so that we may further develop our schemes of work with PCNs as we go forward together.