

## Promoting Person Centred Care for people navigating life with cancer

### Personalised Care Programme Board

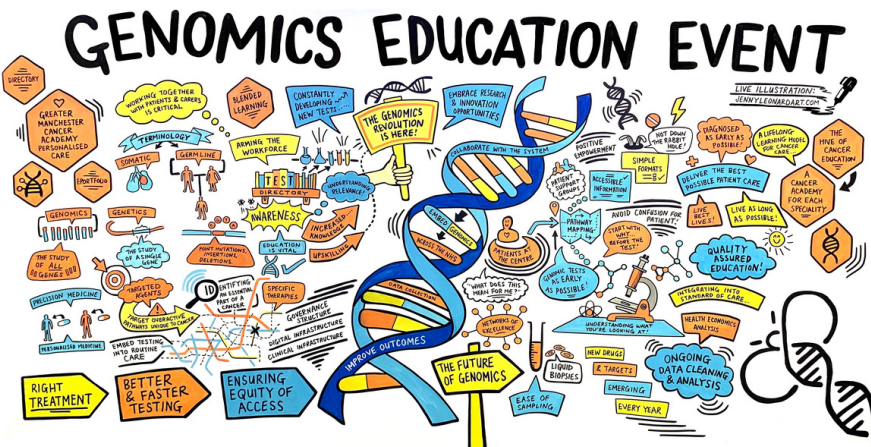
Update from Mike Harrison PC Board Patient Rep

The Personalised Care Programme Board met for the second time on the 4th October. Meeting in person really helps us to build stronger working relationships as we grow and mature.

- It was agreed that the membership of the group should be extended to include a representative from the Cancer Care Coordinator (CCCs) workforce.
- A dashboard is being developed to allow us to monitor the implementation of key personalised care interventions.
- An Innovation Fund is going to be available for clinical, non-clinical and third sector teams to apply for.
- The Board was updated on the progress to secure funding for a GM wide remote monitoring system to support Personalised Stratified Follow up (PSFU).
- The Board heard about the Person Centred Care Programme being run by the Integrated Care Board (ICB). The Board recognises the huge opportunity for working more closely for the benefit of people living with cancer.

**The Board will be meeting again on Monday 4th December.**

### Genomics Education Event



The Genomics Education Event brought together healthcare professionals and patients to learn about genomics in cancer. It was also a great opportunity to learn about the work we are doing in Greater Manchester to embed genomics into cancer care.

Thank you to all our speakers, facilitators and panel members who made the event possible!

#### Event Outputs - what's next?

In the coming weeks, we will be uploading the recordings of all the talks onto the GM Cancer Personalised Care Academy webpage. All those who attended the event will also receive feedback from the breakout session they took part in.

We will also keep you informed on the Genomics Strategy we are putting together in GM Cancer. This strategy will take information and feedback we gathered at the event on what you feel is needed to truly embed genomics into cancer care in Greater Manchester. This is an exciting time for the world of genomics, and we want you to help us transform personalised treatments in cancer.

# Project Updates

## HWB & Late Effects

### Health & Wellbeing (HWB)

Every person with cancer is entitled to receive information to support their physical, social and mental wellbeing at every stage of their cancer experience. I have been working with services across Manchester to identify what they offer to patients, and I am now working with patients to evaluate the services' HWB offers, and with pathway boards to develop resources in areas where gaps have been identified.

### Late Effects

As new treatments are developed and more people live for a longer after their initial diagnosis, the number of people experiencing long term effects of their cancer treatment is increasing. I am working to establish a delivery group with the ambition of ensuring that everyone in Greater Manchester can benefit from appropriate care for these sometimes debilitating conditions.

**Miranda Breen - Project Manager**

I am supporting Secondary care to embed the core interventions of Holistic Needs Assessments (HNAs), Personalised Care Support Plans (PCSPs) and Treatment summaries (TS). Our ambition is that all patients who are diagnosed with cancer will receive good quality HNAs, PCSPs and TSs to support them to understand their condition and support them whilst they live with cancer. All of these core interventions are needed to support the safe and effective use of Personalised Stratified Follow Up (PSFU).

The Alliance will also take an active role in monitoring and reporting improvements with our newly developed dashboard.

**Andrea Webber - Project Manager**

## Core Interventions

Don't forget, applications for the Personalised Care Innovation Fund must be submitted by close of play on Monday 30th October

Next month we will be telling you more about the importance of understanding late Effects and the outcome of our Innovation Fund



**Miss Clare Garnsey**  
Associate Medical Director  
Personalised Care



**Freya Driver**  
Programme Director  
for Personalised



**Dr Lydia Briggs**  
Acute Care Clinical Lead  
for Personalised Care



**Dr Steve Churchill**  
Primary Care Clinical Lead  
for Personalised Care

### Important dates

PC Delivery Group 07/11  
Genomics Delivery Group  
09/11



### Patient/ Carer Rep involvement this month

[Help us to decide how to allocate the Personalised Care Innovation Fund](#)

See the full list of opportunities [here](#)

### New content for NHS Futures this month

[Tameside Stakeholder Event slides and resources](#)

[Tacking Health Inequalities in Cancer care training by ELHC](#)

