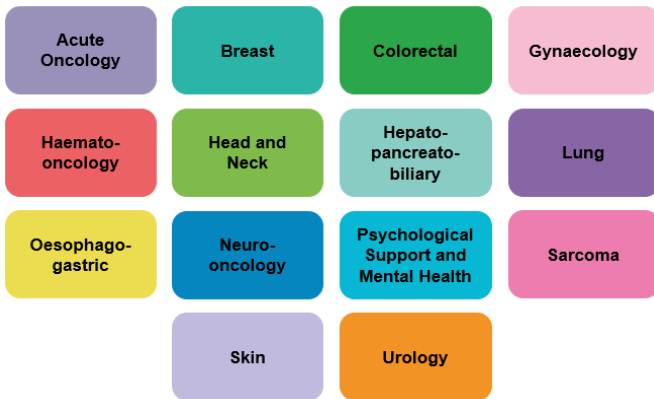




# GM Cancer Pathway Boards

Susan Todd, Programme Director for Transformation, GM Cancer  
Alison Armstrong, Associate Director, GM Cancer

## 14 Pathway Boards



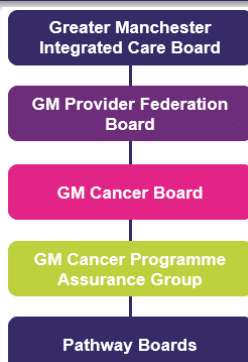
## Example Membership



## Pathway Board (PWB) Overview

- 14 Pathway Boards: 12 disease-specific and 2 cross-cutting boards with the purpose of improving patient outcomes
- Each led by a Clinical Lead and a Pathway Manger, providing clinical and managerial leadership with overall responsibility for outcomes, quality of services and patient experience of their integrated care pathway
- With links to the Operational Delivery Networks for Children, Teenage and Young Adult Cancers, Radiotherapy, and GM forums such as Imaging and Pathology Networks
- PWBs use innovative approaches to improve the pathway, supporting patients and staff, in line with NHS Long Term Plan and annual operational planning guidance priorities, i.e. early diagnosis, prevention, operational delivery, faster diagnosis, personalised care, treatment, addressing inequalities, workforce and education, and research
- Engagement and collaborative working are key, with collective decision making across our GM care settings and staff groups, with user involvement (patient voice), VCSE and partners external to the NHS
- Decisions are based on best practice and evidence such as data and from research, reducing unwarranted variation and inequalities, aligned with the needs of the GM population
- The PWBs develop GM models of care and policies to address the challenges in delivery of NHSE cancer standards, work closely with other GM Cancer programmes, Cancer Alliances, and with regional and national forums
- Each PWB has an annual work programme with progress reported quarterly to the GM Cancer Board and GM Cancer networks

## Governance Structure



## PWB Work Programme Template

Programme of Work 2022/23	Last updated:					
GM Cancer Pathway Board:	Clinical Lead:			Pathway Manager:		
Link to NHS Long Term Plan/Planning guidance	Deliverable	Measure - SMART (output)	Responsibility - Named lead	Completed by end of (month/year)	RAG Status and if complete	Comments, required if RAG status is amber/red (mitigation)
Prevention						
Earlier Diagnosis						
Treatment						
Performance						
Personalised care and follow up						
Reducing Inequalities						
Patient Experience/User Involvement						
Research						
Education & Workforce						

The current work programmes can be found on the GM Cancer Website - About Us - Our Cancer Board - Cancer Board Minutes