



Developing a referral pathway for patients with Breast Liver Metastases

Authors: Mr Thomas Satyadas, Ms Clare Garnsey, Claire Goldrick

Affiliations: Greater Manchester Cancer, Manchester University Foundation Trust, Bolton NHS Foundation Trust

Treatment for patients with Breast Liver Metastases

There is currently no dedicated treatment pathway available for patients with Breast Liver Metastases. Although there is no robust evidence for Liver targeted treatment by surgery, ablation, or Stereotactic Ablative Radiotherapy (SABR), there is increasing evidence that Liver targeted therapy provides reasonable overall and disease-free survival for selected Breast Cancer patients with Liver Metastases.

Historically, there have been sporadic referrals to the Hepato-Pancreato-Biliary (HPB) Specialist Multidisciplinary Team (sMDT) to review and discuss potential treatment options causing inequity of access to treatment for patients across Greater Manchester.

With appropriate patient selection and direct involvement of Breast Oncologists, Liver targeted therapy using surgery, ablation or SABR could potentially provide better outcomes for a select proportion of Breast Cancer patients with Liver Metastases.

Creating a dedicated referral pathway for patients

AIM:

To create a pathway for referral to the HPB sMDT for consideration of treatment options

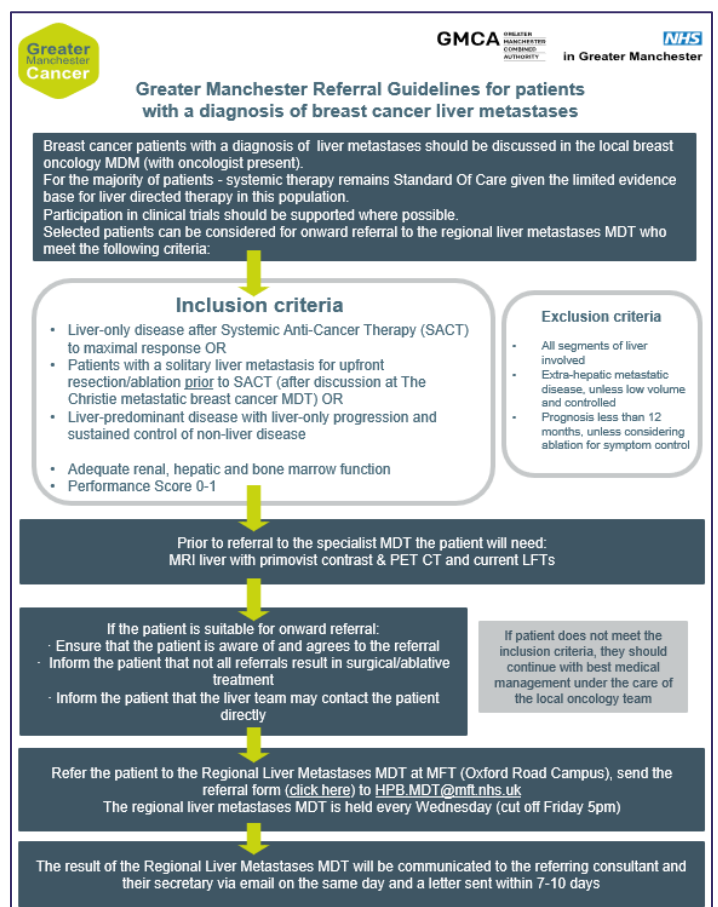
COLLABORATION:

Members from the GM Cancer Hepato-Pancreato-Biliary and Breast Pathway Boards including surgeons, oncologists, specialist nurses, radiologists and patient representatives worked collaboratively to develop the inclusion and exclusion criteria and referral pathway.

Developing the eligibility criteria was challenging due to the lack of national guidance and therefore, the success of the pathway relies heavily on the collaboration of clinical teams across Greater Manchester.

CHANGE:

The pathway was launched in September 2021 and there has been an increase in numbers of patients referred for discussion and treated.



Over the next twelve months, an audit of referrals will be conducted to assess quality and equity of access to treatment as well as the creation of a support group for patients treated for Breast Liver Metastases in Greater Manchester.