



Early Cancer Diagnosis – Fast Facts for Primary Care

Dr Sarah Taylor, Ali Jones, Lauren Kelly

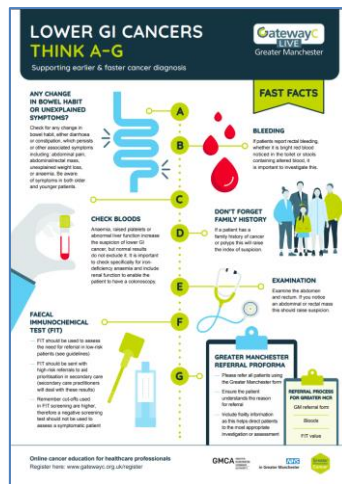
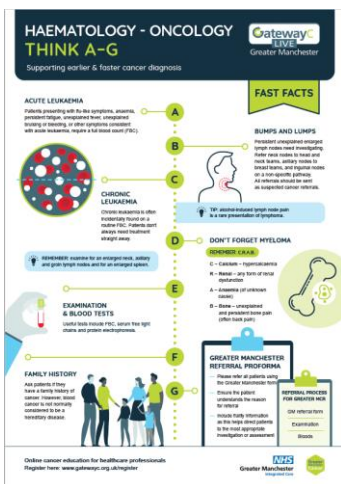
Background

Aim: To provide primary care professionals with access to useful tools and information to enable earlier and faster cancer diagnoses

Primary care education is essential to support the NHS Long Term Plan achievement of **75% stage 1 or 2 cancer diagnosis by 2028**

Following a request from GM Primary Care Cell and GP Board for **'bite sized' education for primary care**, the GM Cancer Alliance commissioned a programme of bespoke GatewayC education to meet this request. This encompassed a rolling programme of pathway specific webinars (21 to date), bitesize 'Fast Facts' videos and 'Think: A-G' infographics, including Non-Site Specific.

Webinars / Infographics / Fast Facts Videos



Infographics and Lower GI Fast Facts video

Our next event is The Cancer Forum on the 30th of November which will be filled with discussion from leading cancer specialists. The Clinical Specialists will cover key issues relating to the early diagnosis of Head and Neck, Breast, Brain and CNS, Haematology, and Skin cancers