

Protocol for the removal of Ports, and Pleurx Drains

Document Owner:	Claire Mitchell	Accountable Committee:	AO Pathway Board
Date Approved:	tbc	Review date:	<i>July 2021</i>
Target audience:	This guide is for Acute Oncology staff in Greater Manchester and Cheshire NHS Trusts With thanks to Steve Hill, Alexander Gosling and Damian Mullan		

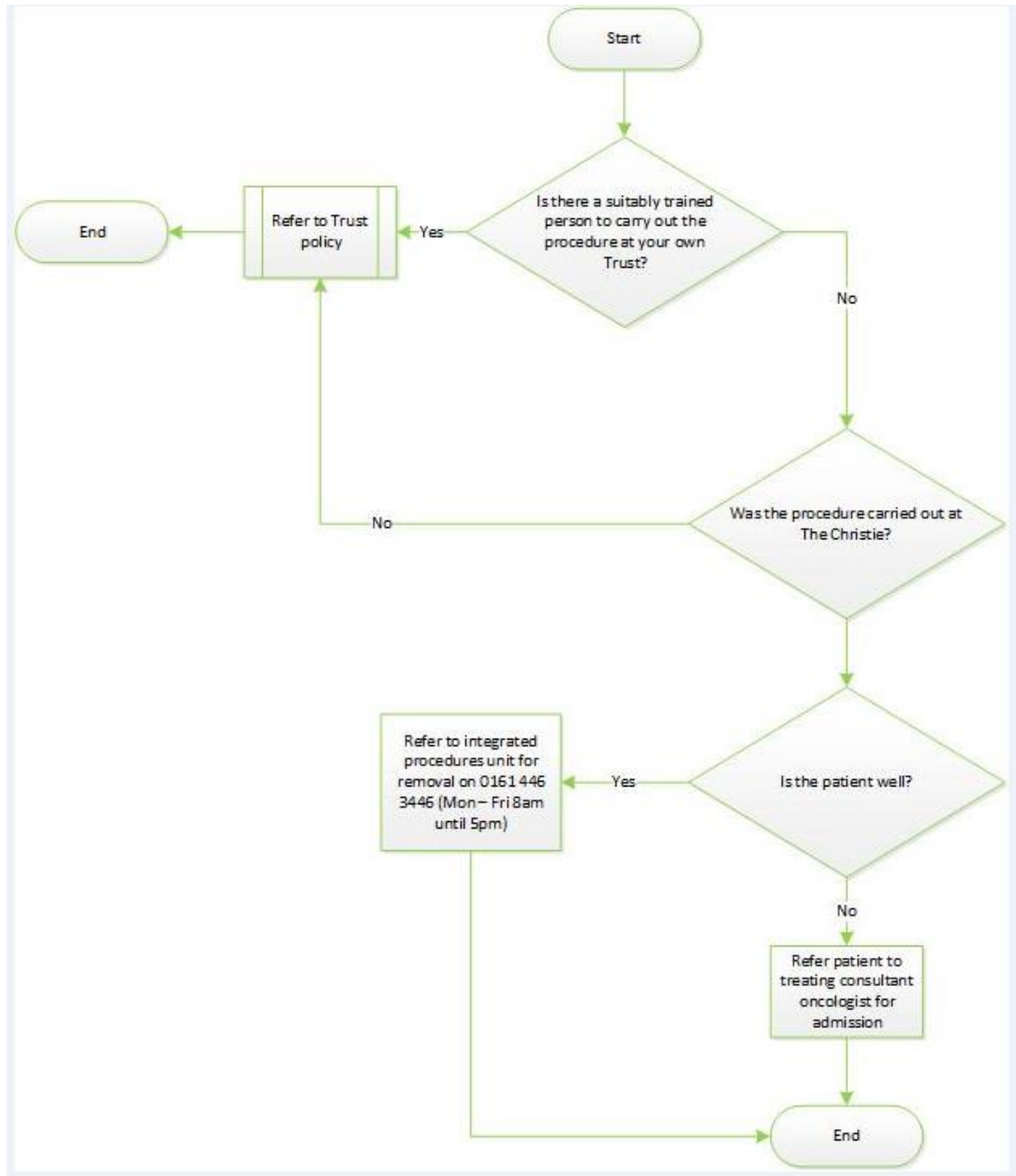
Key points

For implanted ports and pleurx drains inserted at The Christie.

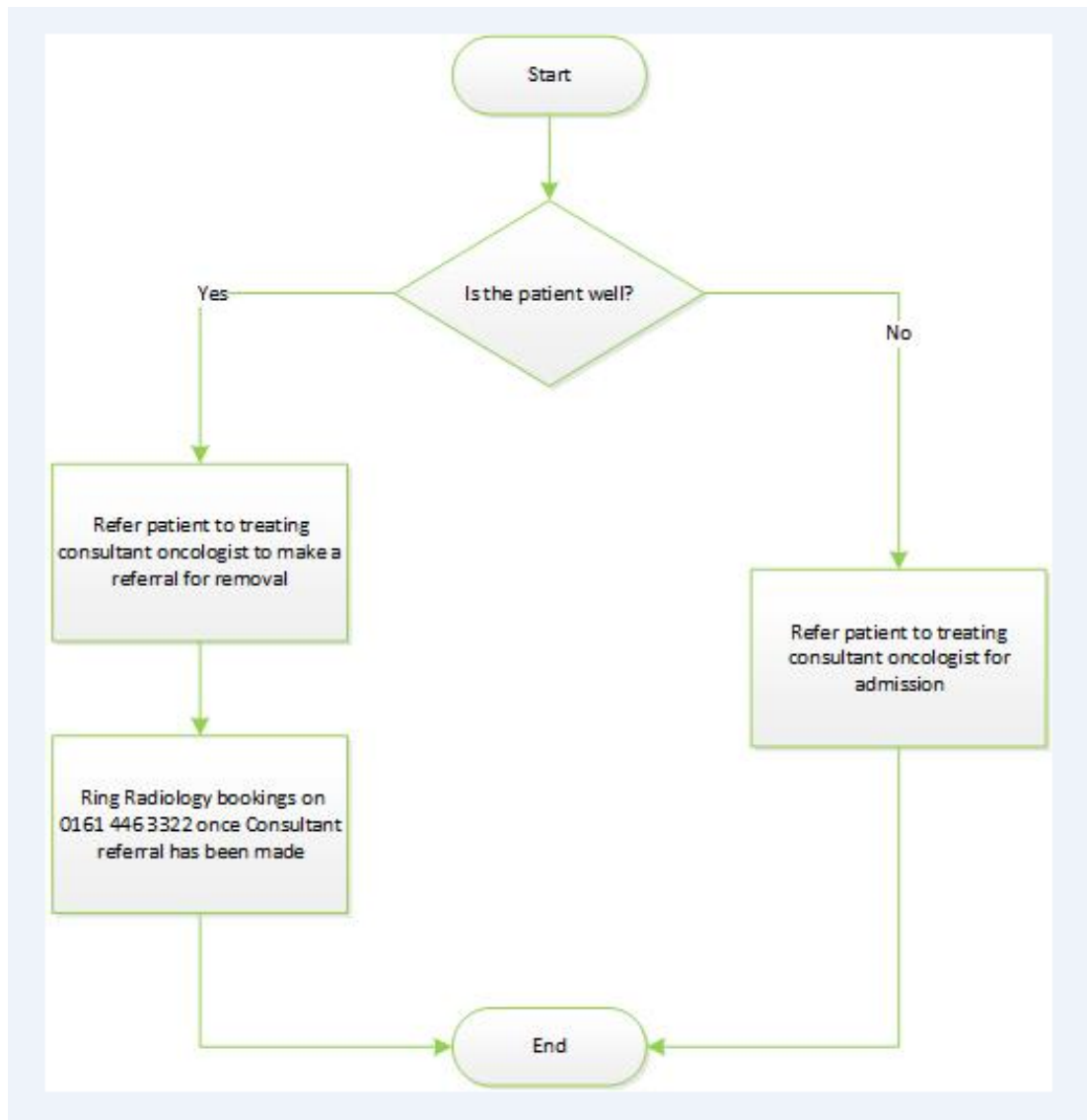
Referral for removal

Training for maintenance of Pleurx drains

For removal of implanted ports and tunnelled CVC's



For Removal of Pleurx Drains



Training - If your team is interested in Pleurx training please contact:-

Gareth Hale at BDI

Tel: 07825 110091

Email: Gareth.Hale@bd.com

<https://www.youtube.com/watch?v=rjltMT7Q1w>